

CONVENTIONAL TRAYS

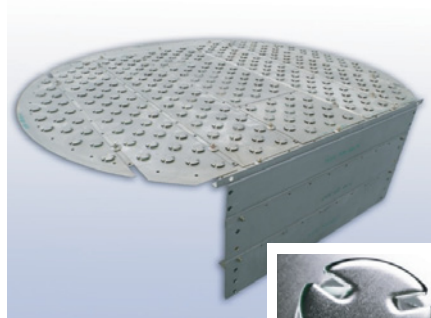
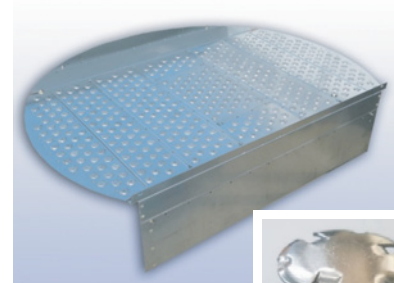
TPT PACIFIC supplies various type of trays such as Sieve tray, Valve tray, Fixed valve tray, Bubble cap tray, Baffle tray, Dual flow tray and High performance tray, etc.

TCV Valve Tray (Conventional Floating Valve)

TCV valve is our standard floating valve and is recommended for many applications.

- Wide operating range
- Higher capacity than standard sieve tray
- High turndown ratio
- Valve type is equivalent to "V-1"

TCVE Valve : This variation of the type TCV valve uses an extruded orifice. Lower pressure drop than TCV valve tray. Equivalent to "V-4"



TCVF Valve Tray (Round Fixed Valve)

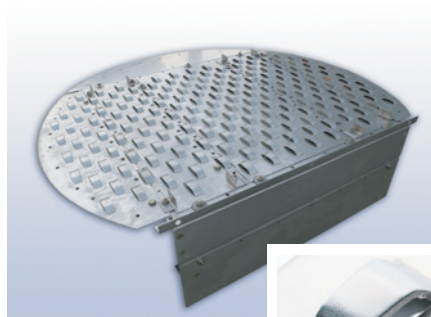
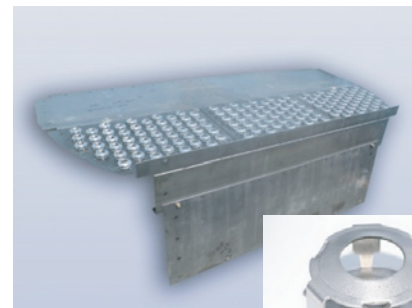
TCVF valve is our standard round fixed valve.

- Higher fouling resistant
- Low pressure drop
- Cost effective

TCC Valve Tray (Caged Valve)

TCC valve is caged valve used in the following applications.

- Low liquid loads
- Requiring high turndown ratio
- Preventing from valve popping out



TRVF Valve Tray (Rectangular Fixed Valve)

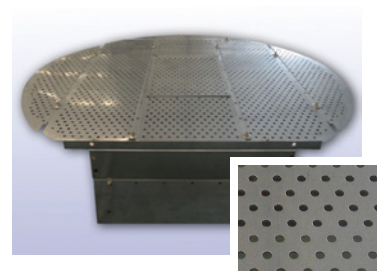
TRVF valve is rectangular fixed valve having following features.

- Lower froth height, Less entrainment
- Superior mechanical strength
- Excellent fouling resistance

Sieve Tray

Sieve trays are widely used in the services that high turndown is not required. It is low cost mass transfer device. TPT offers all common sieve tray designs.

- Lower pressure drop with small holes
- Anti-fouling characteristics



Bubble Cap Tray

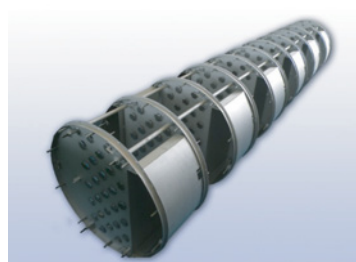
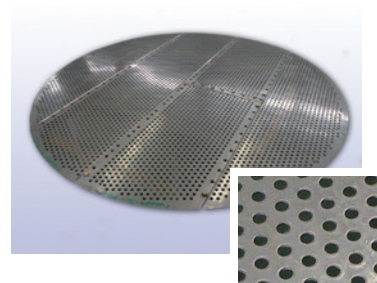
Bubble cap trays are generally used for low liquid loads and have a very high turn down ratio.

- Standard cap sizes are 3", 4" & 6" (Custom design available)



Dual Flow Tray

Dual flow trays are perforated trays without downcomer. As large holes are typically used for Dual flow tray, it is suitable for fouling applications.



Cartridge Tray

Cartridge trays are typically used for requiring a vessel body flange for installation. Column diameters range normally between 300 to 760mm (12" to 30"). Cartridge trays are assembled in bundles for installation. They can be equipped with all types of tray decks and downcomers.

Baffle Tray

- Side to Side Tray
- Disc & Donut Tray
- Shower Deck Tray

These trays are typically applied in severely fouling services. They are configured so that the liquid flows downward through the column, splashing from one baffle to the next lower one. Ascending vapor contacts the liquid by passing through the liquid curtains.

